



Driver488

IEEE 488.2 Drivers for Windows®

Features

- Supports IOtech's PCI488, AT488, Card488, GP488B, and GP488B/MMIEEE 488 controllers
- Supports all 32-bit Windows® operating systems
- Includes support and examples for programming in C/C++, and Visual Basic®
- Includes an interactive control application for exercising instruments

Driver488 provides easy-to-use support for all of IOtech's Personal488 products under the latest Windows® operating systems. The Driver488 package includes any easy-to-use control panel configuration applet that reduces installation and configuration time to a minimum.

On-Event Messaging

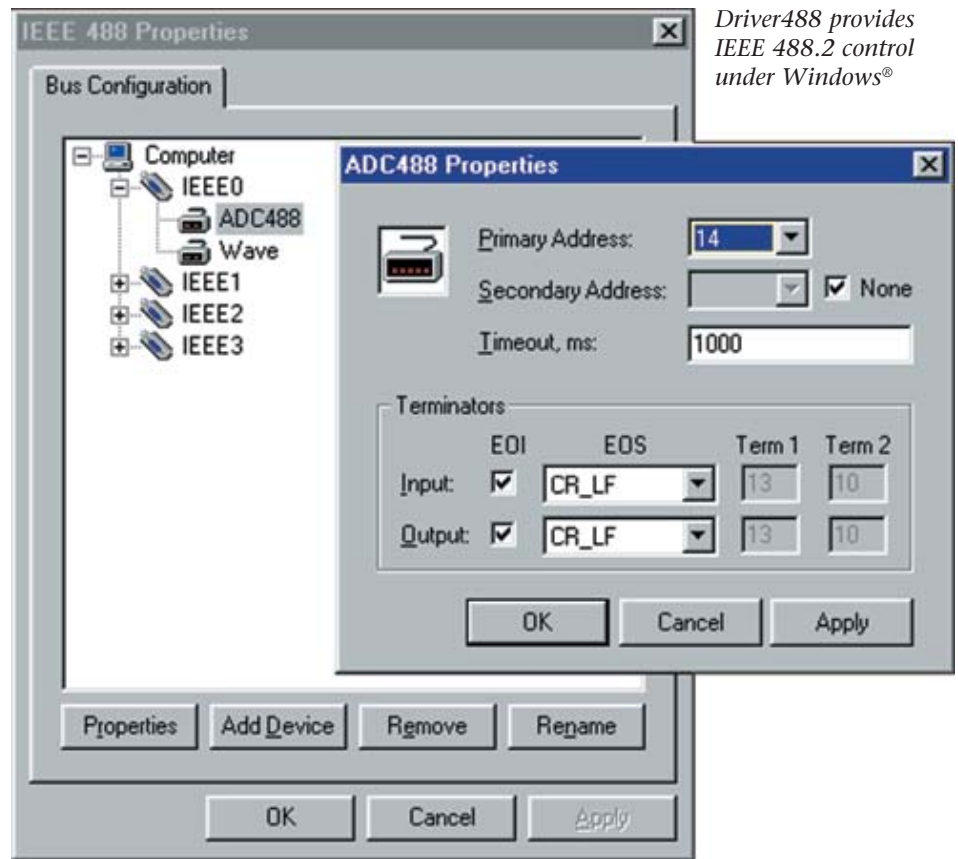
Driver488 features on-event messaging, allowing your application to automatically service IEEE 488 bus events, like an SRQ (service request) from an instrument, as they are detected by the driver. You simply notify the driver of the event type and the notification mechanism. The mechanism can be a window message to a user-specified window handle or a function call to a user-specified callback function.

After the callback is established, the application can attend to other tasks. The driver will automatically notify the application when the event occurs so that the application can vector program control to the appropriate service routine.

On-event messaging can be used by all popular Windows programming languages including C/C++, and Visual Basic®.

Multi-Language Support

Driver488 is a Windows device driver designed specifically for the 32-bit Windows. It supports IOtech's IEEE 488 command set



Driver488 provides IEEE 488.2 control under Windows®

and includes a multi-language interface that supports user-written applications in C/C++ for Windows, or Visual Basic.

Interactive Control Program

WINTEST. WINTEST is a Windows application that provides command-based control of the IEEE 488.2 interface. Through WINTEST's menus, functions from the driver's Application Program Interface (API) can be selected and executed. WINTEST can be used as an API test bed to test function calls and their parameters and to exercise the IEEE 488.2

interface and the connected instruments. WINTEST can also be used as a code generator to verify function call operation and to paste code into your C/C++ source.

Ordering Information

Driver488, Windows, and NI driver is included with purchase of any compatible IEEE 488 controller

Related Products

Personal488/PCI	p. 307
Personal488/AT	p. 308
Personal488	p. 309
Personal488/CARD	p. 310
Personal488/MM	p. 311



IEEE 488.2 Driver Software

Our Personal488™ family of products comes with a complete line of driver software. Every IEEE 488.2 Controller purchase will include a CD which has up-to-date versions of the Driver488 high-performance drivers. Upgrades of our drivers are also available.